

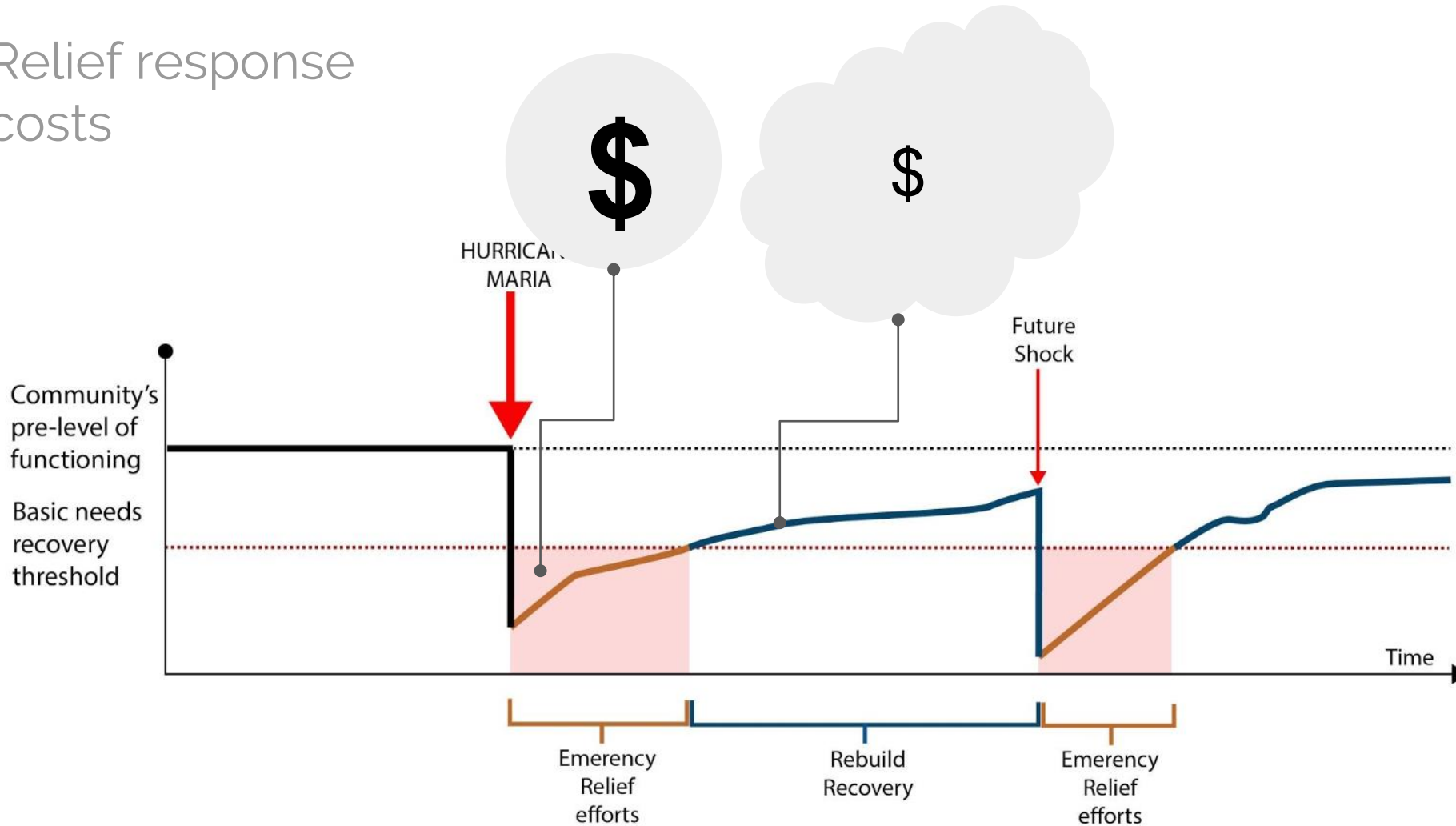
Valuing People and Place in Community Resilience Building

A look at the potential of social and human capital and their interactions with preparedness, resource diversity, and wellness in community organizations of Puerto Rico post Hurricane Maria

the
City College
of New York



Relief response costs



Scale

Community/
Neighborhood

What do people
need/uses, immediately
after disaster?

WELLBEING

RESILIENCE



PHYSICAL CAPITAL

HUMAN CAPITAL

SOCIAL CAPITAL

FINANCIAL CAPITAL

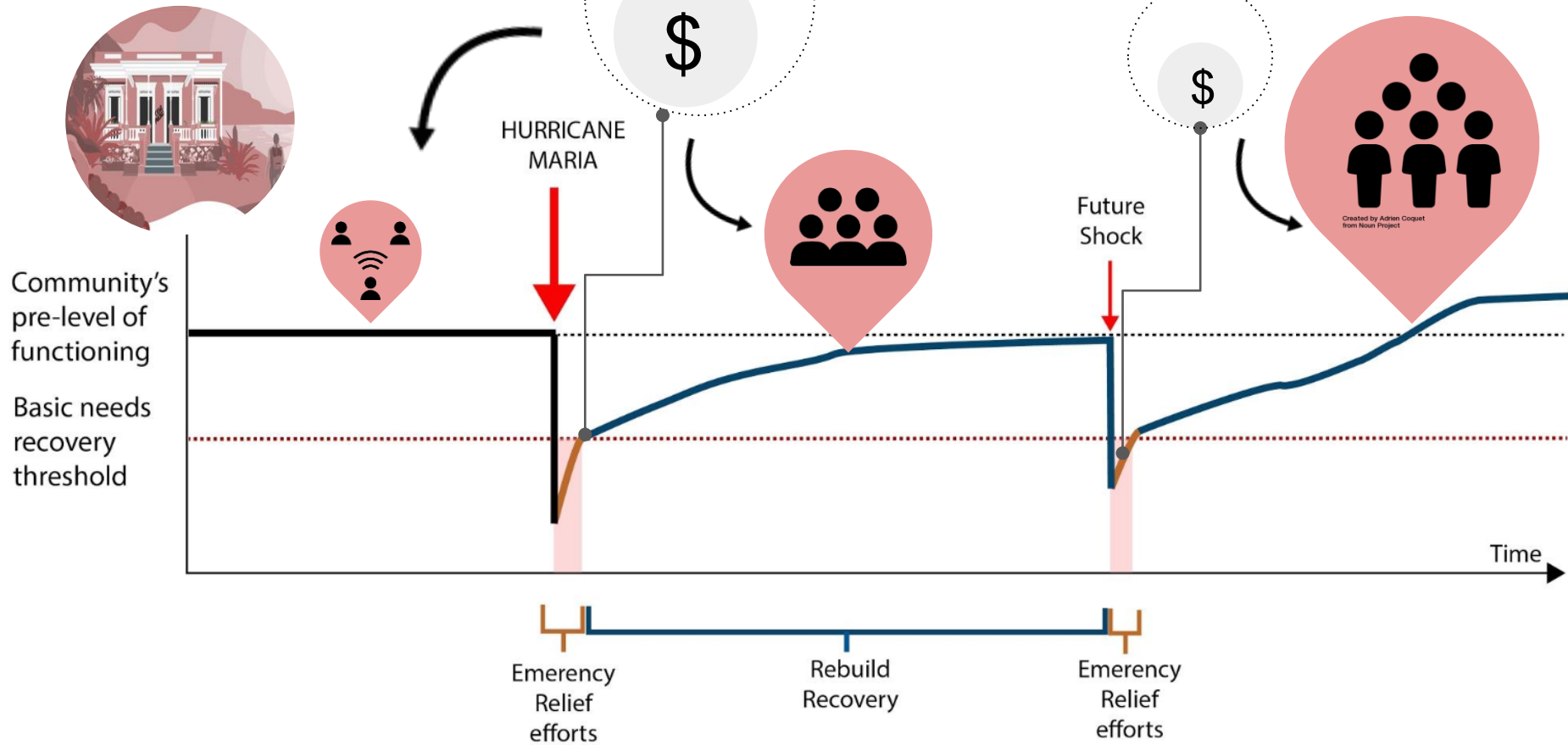
NATURAL CAPITAL

Variable

Measurable

Involves inhabitants

Preparedness Investment



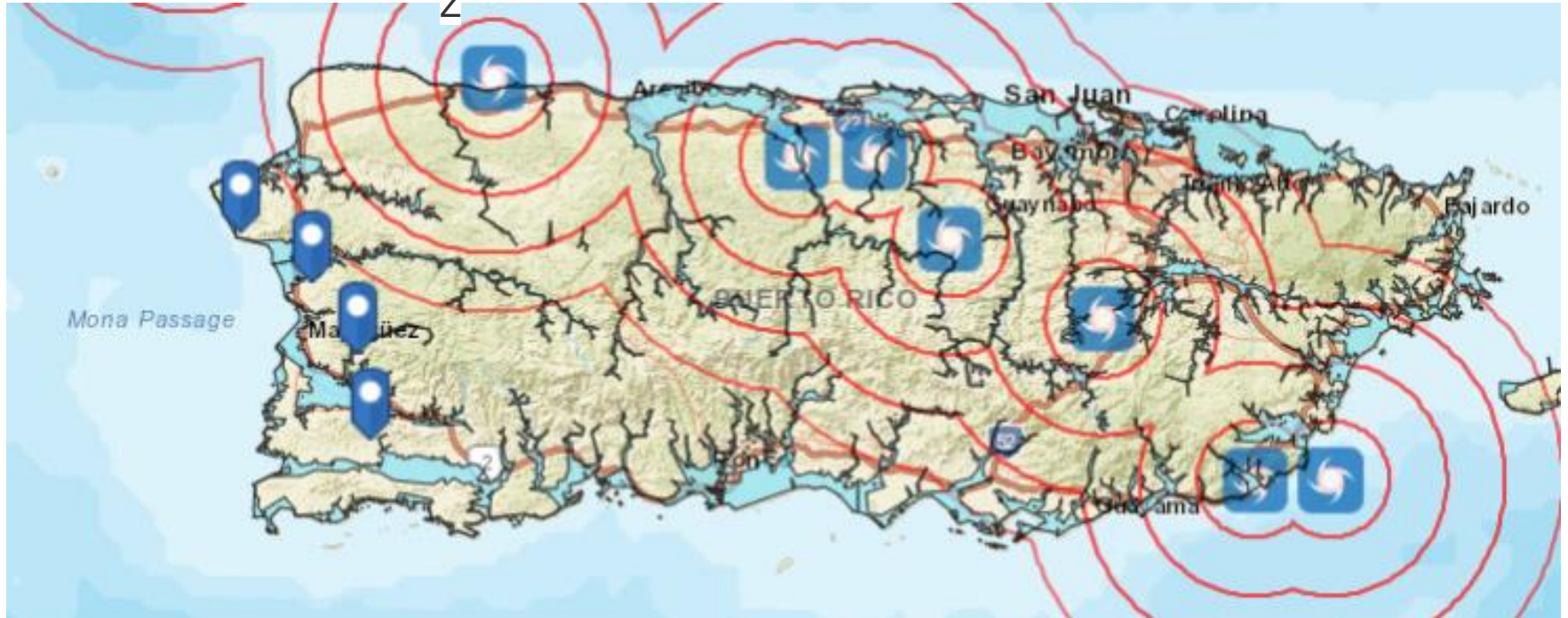
4 Islanded Communities Faced with Hazards

**BARREO
RINCÓN**

**LAS SOLEDAD
MAYAGÜE
Z**

**LAS CAROLINAS
SAN GERMÁN**

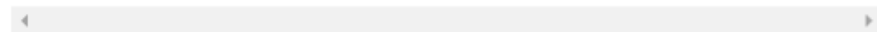
**LAJAS
LAJAS**



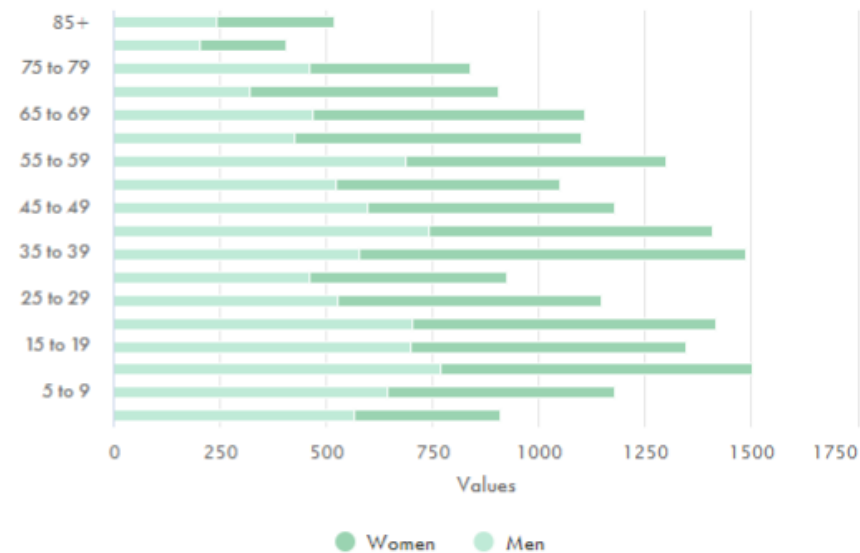
Community Socioeconomic Context

1.2 Our Community's Needs

variable	Total Population	Poverty Rate	Dependent Population	Univ Degree : No HS
Our Community in Numbers	20,378	48.15%	10,378	1 : 1.18



Age Profile Community

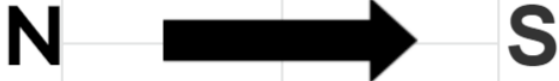


References:

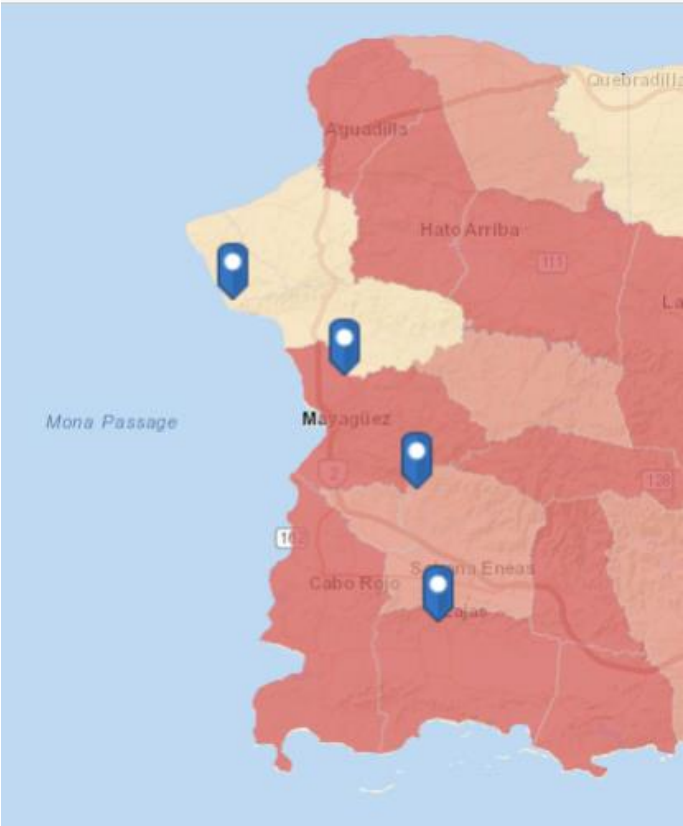
ACS (2017). Educational Attainment For The Population 25 Years And Over, Individuals Below Poverty Level. Puerto Rico, Sex By Age, Sex By Age By Disability Status And Total Population, 5-yr Estimates. US Census.

Community Economic Context

BARRIO:	BARREO	LAS SOLEDAD	LAS CAROLINAS	LAJAS
MUNICIPALITY:	RINCÓN	MAYAGÜEZ	SAN GERMÁN	LAJAS
Land Use:	Urban	Rural	Rural	Urban
		Rural		Urban
		Rural		Urban
% Families < Poverty Line:	43.50%	46.20%	51.80%	60.60%
2017 Median Household Income:	\$19K	\$12K*	\$14K	\$10K
		\$43K		\$17K*
		\$13K		\$11K



Community Social Context

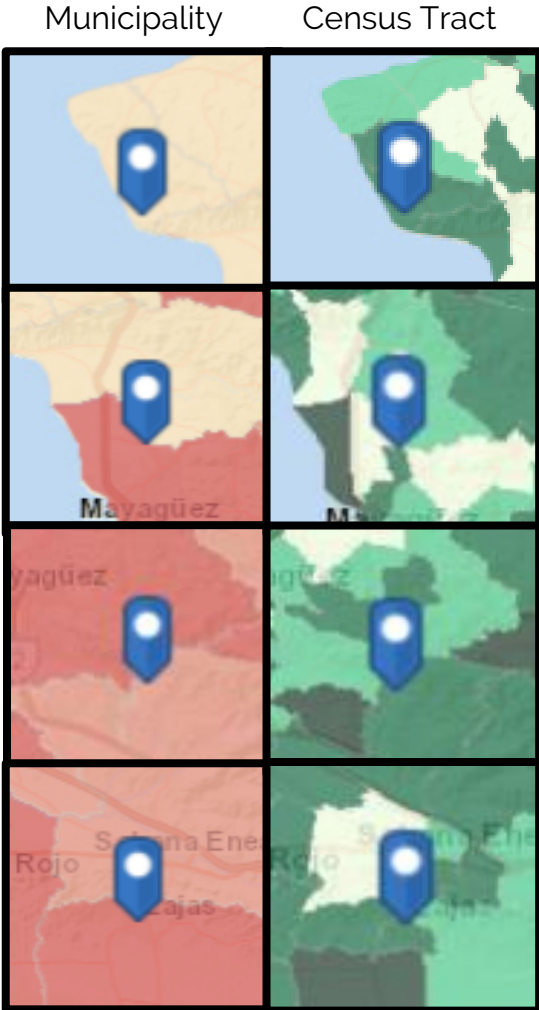


**BARREO
RINCÓN**

**LAS SOLEDAD
MAYAGÜE
Z**

**LAS CAROLINAS
SAN GERMÁN**

**LAJAS
LAJAS**



Source: Centro Data Hub

Bursting with diverse knowledge & skills

BARRERO

Shared Dream: a community center





We learned about the perceptions these communities have of formal organizations and how to best encourage open participation.



Cherish: environmental services

Feel: Isolation in elderly and/or disabled populations lacking transportation

Lack: financial support & connections



LAS CAROLINAS

Come together to face current, urgent problems like reconstruction, trash, and violence.





Rely On: stocked resources and financial capital

Need: communication system

Have: Skills mostly tied to professions in a less elderly community



Shared Dream: Solar panel generators for sustainable energy supply

LAJAS



Strong & growing radio communication system

Have: 5013c non-profit status

Believe in: Importance of educating children in preparedness, knowing your history, and communication



Shared Dreams: They have many.

- restoration of wells
- solar energy investment
- evacuation planning development



LAS SOLEDAD



Even if the community space exists it is not always enough to create a strong community. Leaders play a key role in community center culture.





Project Data:

- Grounding of basic needs with community
- Social and human capital scores
- Community Preparedness Checklist
- Resource diversity scores

Community Deliverables:

- Preparedness Building Checklist and Strategies
- Social and Human Capital Building Scorecard and Strategies
- Connection to local and municipal resources

Collaboration:

- Validation of data and results with SenseMaker
- Continued collaboration with community partners
- Future recommendations for CRISP research
- Quantification of community level human system in socio-technical network model

Big Goals:

- Create user-friendly quantification of social and human capital
- Analyze the impacts of social and human capital on various community capacities
- Provide tools to enhance community wellness
- Fund for a dream project that builds capacity for resilience and everyday wellness

References

1. Aldrich, D. P., & Meyer, M. A. (2015). Social capital and community resilience. *American behavioral scientist*, 59(2), 254-269.
2. Arbon, P. (2014). Developing a model and tool to measure community disaster resilience. *Australian Journal of Emergency Management, The*, 29(4), 12.
3. Bozza, A., Asprone, D., & Manfredi, G. (2015). Developing an integrated framework to quantify resilience of urban systems against disasters. *Natural Hazards*, 78(3), 1729-1748.
4. Cutter, S. L. (2016). The landscape of disaster resilience indicators in the USA. *Natural hazards*, 80(2), 741-758.
5. ICRC and International Federation of Red Cross and Red Crescent Societies (2008). *Guidelines for assessment in emergencies*.
6. Leykin, D., Lahad, M., Cohen, O., Goldberg, A., & Aharonson-Daniel, L. (2013). Conjoint community resiliency assessment measure-28/10 items (CCRAM28 and CCRAM10): A self-report tool for assessing community resilience. *American journal of community psychology*, 52(3-4), 313-323.
7. Maguire, B., & Cartwright, S. (2008). *Assessing a community's capacity to manage change: a resilience approach to social assessment*. Canberra: Bureau of Rural Sciences.
8. Mpanje, D., Gibbons, P., & McDermott, R. (2018). Social capital in vulnerable urban settings: an analytical framework. *Journal of International Humanitarian Action*, 3(1), 4.
9. Onyx, J., & Bullen, P. (2000). Measuring social capital in five communities. *The journal of applied behavioral science*, 36(1), 23-42.
10. Plan, D. R. R. A. *Community Based Resilience Assessment (CoBRA) Conceptual Framework and Methodology*.
11. Repetto, R. (1986). *World Enough and Time*. New York: New Haven.
12. Saunders, C. M., Kaye-Blake, W. H., & Campbell, R. (2010). Capital based sustainability indicators as a possible way for measuring agricultural sustainability.
13. Solow, R.M. (1986). On the intergenerational allocation of natural resources. *The Scandinavian Journal of Economics*, 88(1), 141-149
14. Yu, S., Kim, S. W., Oh, C. W., An, H., & Kim, J. M. (2015). Quantitative assessment of disaster resilience: An empirical study on the importance of post-disaster recovery costs. *Reliability Engineering & System Safety*, 137, 6-17.